

# KENTUCKY'S FINEST

## *Black Hereford Sale*

October 25, 2025 1pm EST

HOSTED BY TRIPLE T FARMS, NANCY, KY.



Visit our website for videos and sale information  
[kentuckyblackhereford.org](http://kentuckyblackhereford.org)

# KENTUCKY'S FINEST *Black Hereford Sale*

## EVENT SCHEDULE

Friday, October 24, 2025  
9am-7pm viewing of cattle

Saturday, October 25, 2025  
9am -1pm viewing of cattle  
11:30am Lunch served  
1pm eastern Sale Time

## EVENT LOCATION

TRIPLE T FARM  
2616 HWY 1664  
NANCY, KY. 42544

## SALE DAY PHONES

Tim Tarter 606-305-2289  
Phillip Mattingly 859-338-8197  
Matthew Hunt 606-923-5885

## SALE REPRESENTATIVES

AUCTIONEER  
Duane Stephens 812-887-1523  
Kentucky License # 258836

## RINGMEN

Rob Neikirk 618-839-3143  
Andy Howell 812-620-1121  
Matt Jackson 502-667-0142

## TRUCKING

We will help coordinate any necessary hauling for purchases made on sale day.

\*No cattle will be loaded until after the sale\*

## VETERINARIAN

Dr. Darrel Coffey 270-585-4004

## CATALOG PRODUCTION

Teresa Tarter

**ABSENTEE BIDDING** Buyers are asked to register through CCI.Live and bid online, but can also bid by phone through one of our sale day phone staff. You first must set up a bidder number through our clerk or one of our sale day phone staff. You can rest assured that our staff will help direct you and answer questions with integrity in order for you to get the cattle you want. A full guarantee and terms of sale apply to all bidders.

**INTERNET BIDDING** We are pleased to bring you real-time internet bidding and a live broadcast of this sale through CCI.Live To watch or bid online, visit [www. CCI.Live](http://www.CCI.Live) to register and apply for bidding in advance of the sale. If you have any questions, contact CCI.Live 812-530-0748 (Brooklyn Graham) or for Tech Support 405-400-9505



**TERMS & CONDITIONS** Terms of the sale are cash, credit card at 3.5% convenience fee, or good check. The auctioneer will settle any disputes as to bids. All cattle are to be paid for in full by the purchaser immediately following the sale and will not be released until settlement has been made. Cattle will not be transferred until paid in full.

**CREDIT CARD PAYMENT** We will accept all major credit cards this year with a maximum of 3.5% convenience fee applied to your purchase.

**STATE TO STATE TRANSPORT** Our veterinarian will issue health papers for the release of the cattle to your state provided they meet your state's requirements. All cattle should meet most state requirements. It is the buyer's responsibility to understand their state requirements that may have special guidelines for receiving cattle. Buyers purchase cattle for transport at their own risk.

**GUARANTEE** All guarantees, both written or expressed, are the responsibility of the individual consignor. All cattle are guaranteed to be as stated by the consignor. Every effort will be made to ensure safe handling of the sale cattle all the way through pick-up or delivery. EVERY PURCHASE IS FULLY GUARANTEED TO MEET THE APPROVAL OF THE BUYER UPON PICK-UP OR DELIVERY.

## THANK YOU TO OUR SPONSORS

The KY Black Hereford Association is a nonprofit organization. The mission and purpose of the association is to bring attention to the breed and its benefits to cattlemen. It further endeavors to provide marketing opportunities and support for its members that are raising quality Black Hereford cattle. We depend on sponsors and advertisers for their support and contributions. On behalf of the association and its members we want to express our sincere thanks for your support and advertisements that helped make this catalog possible.





# October 25, 2025

**HERD HEALTH** All animals have been vaccinated and dewormed within 90 days of the sale. All animals sell with health certificates from each consignor's personal veterinarian.

**BULL FERTILITY AND TEST** All the bulls in the sale are virgin bulls, unless otherwise stated, and have completed a complete Breeding Soundness Exam (BSE). All bulls are guaranteed by the consignor to be fertile and capable of breeding.

**ANNOUNCEMENTS** A supplement sheet will be available sale day with any up-to-date information and corrections. This sheet and any announcements made from the auction block will take precedence over statements in this catalog. We reserve the right to remove any sale lot not meeting the sale specifications prior to the sale.

**EXTENDED HOUSING** To help with the coordination of purchases and trucking, extended housing is available through Triple T Farms at the rate of \$3 per lot per day to cover the expense of feed, hay, and silage. Contact Tim with any questions.

## Accommodations:

There are several hotels in Somerset, Ky. Due to a local event we would recommend you book early.



*Kentucky's Finest Black Hereford Sale 2025*

# WELCOME

Fellow Cattlemen,

On behalf of the KY Black Hereford Association, I want to welcome you and invite you to be with us on sale day, October 25<sup>th</sup> in person or join us online at CCI.live This is the 4<sup>th</sup> annual sale for the association. The sale in the past has been an overwhelming success for both buyers and sellers. Our consignors, who are members of the association have always brought us some very high-quality Black Hereford Cattle and Black Hereford influenced cattle. I have screened the offerings at this year's event as always, and they are even better than in the past.

You don't need me to tell you what an exciting time it is to be in the cattle business. We have all witnessed record-breaking prices and for once prices are where they should be for all of us to make a small profit. As most of you know, at some time this market will change just as it always has throughout history. The bright side is that all indications based on the supply chain market and an increase in export beef along with a strong domestic demand for beef that we are going to be in favorable market for a few years.

Though your purchase price for replacement females and bulls is up some the selling price of your cattle easily offsets that increase in cost. Slaughter bulls and cows are setting records everyday and continue to be on the up-swing. The time couldn't be more perfect to improve your genetics and replace some older animals with younger and improved quality.

We have an impressive offering and the demand for Black Hereford and Black Hereford influenced cattle continues to increase each year. I am confident we can meet your needs for anything you're looking for this year. I strongly encourage you to move forward in the cattle business and to take advantage of this opportunity to improve your herd. It will pay you big dividends down the road and the profits it rewards you with, along with the benefits of younger and better genetics in this market make new purchases an easy choice. We must stay vigilant and progressive in our thinking, or we will be left behind, and it will cost you in the long run. An investment now will pay for itself faster than ever in today's market. I hope to see you all on sale day to experience the excitement of this great cattle market and the excitement of Black Hereford cattle. It is the most exciting thing that has hit the cattle industry in decades.

Sincerely,

*Jim Tarter*

KBHA President

PAGE 2

# Consignors

## ACORN RIDGE

STEVE JONES  
10131 SPOUT SPRINGS RD  
SHOALS, INDIANA 47581-7473  
(812) 295-6412  
[STEVE@JONESOILONLINE.COM](mailto:STEVE@JONESOILONLINE.COM)  
**LOTS: 33, 55, 59, 62, 63 & 64**

## BARRETT FARM

SCOTTY BARRETT  
175 DRY FORK RD  
BRUSH CREEK, TENNESSEE 38547  
(615) 854-6332  
[COWANDBULLS@ICLOUD.COM](mailto:COWANDBULLS@ICLOUD.COM)  
**LOTS: 29, 30, 67 & 68**

## F&F FARM

RICHARD W FRENCH  
3267 LEWIS ATKINS RD  
WOODLAWN, TENNESSEE 37191  
(931) 220-6385  
[FRENCH1524@YAHOO.COM](mailto:FRENCH1524@YAHOO.COM)  
**LOTS: 57 & 58**

## HEAD BROTHERS FARM, LLC

COREY HEAD  
2714 RALPH HEAD RD.  
CEDAR HILL, TENNESSEE 37032  
(615) 389-9638  
[HEADCOREY@ATT.NET](mailto:HEADCOREY@ATT.NET)  
**LOTS: 2, 22 & 53**

## HUNT FARM

MATTHEW HUNT  
1051 TYGARTS BEND  
SOUTH SHORE, KENTUCKY 41175  
(606) 923-5885  
[MORTON.HUNT28@GMAIL.COM](mailto:MORTON.HUNT28@GMAIL.COM)  
**LOTS: 3, 23, 24, & 32**

## JH CATTLE

TODD & CHRISTINE HAMPTON  
922 CHILDRESS FERRY RD  
BLOUNTVILLE, TENNESSEE 37617  
(423) 302-8054  
[TODDHAMPTON1@GMAIL.COM](mailto:TODDHAMPTON1@GMAIL.COM)  
**LOTS: 46 & 46A, 54, 56 & 60**

## MATTINGLY CATTLE

PHILLIP MATTINGLY  
750 DESTIN DR  
COXS CREEK, KENTUCKY 40013  
(859) 338-8197  
[PHILIPB.MATTINGLY@GMAIL.COM](mailto:PHILIPB.MATTINGLY@GMAIL.COM)  
**LOTS: 15 & 16**

## SMALL ACRES FARM

DUSTIN, RHONDA, KENADI & KORTNI RUMBLE  
4116 US HWY 231  
LOOGOOTEE, INDIANA 47553  
(812) 486-7992  
[SMALLACRESFARM13@GMAIL.COM](mailto:SMALLACRESFARM13@GMAIL.COM)  
**LOTS: 50 & 50A, 51 & 51A**

## SWEETING FAMILY CATTLE

PENELOPE & KEITH SWEETING  
3104 130TH ST  
RIVERSIDE, IOWA 52327-9089  
(319) 631-3365  
[SWEETBUILT@AOL.COM](mailto:SWEETBUILT@AOL.COM)  
**LOTS: 1 & 31**

## TRIPLE T FARMS, LLC

TIM & TERESA TARTER  
2616 HIGHWAY 1664  
NANCY, KENTUCKY 42544-8644  
(606) 305-2289  
[TRIPLETBLACKHEREFORDS@GMAIL.COM](mailto:TRIPLETBLACKHEREFORDS@GMAIL.COM)  
<http://www.tripletblackcattle.com>  
**LOTS: 5, 9, 10, 11 - 14, 17-21, 34 - 45, 47 & A, 48 & A, 49 & 49A, 52 & A, 65 & 66**

## WAYNE FLYNN

769 ARD RIDGE RD  
NANCY, KENTUCKY 42544  
(606) 305-1029  
[WDFLY2001@AOL.COM](mailto:WDFLY2001@AOL.COM)  
**LOTS: 4, 6, 7, 8, 25, 26, 27, 28, & 61**



# ***BOLT EPD DEFINITIONS***

**(CED)** Calving Ease EPDs are calculated using birth weight and calving ease score information. Calving ease EPDs represent the ease with which progeny of an animal are born to first calf heifers. The EPD is expressed as a percent probability, with a higher value representing calves with a higher probability of being born unassisted.

**(BW)** Birth weight is an indicator of calving ease. Higher birth weight EPDs usually indicates more calving difficulty.

**(WW)** The weaning weight EPD reflects progeny growth differences up to 205-days.

**(YW)** The yearling weight EPD reflects progeny growth differences through to 365-days.

**(MILK)** The milk EPD indicates the ability of a sire's daughters to provide their calves with an environment that encourages growth from birth to weaning, through mothering ability and milk production. This EPD is expressed in the expected difference in pounds of calf at weaning.

**(TM)** Total Maternal Also known as Milk + Growth, this EPD combines the milk EPD plus  $\frac{1}{2}$  the weaning weight EPD. It is expressed in pounds of calf weaned at 205-days and combines the genetics for preweaning growth and the influence of the maternal environment on the weaning weight of the daughter's progeny.

**(CEM)** Calving Ease Maternal EPD represents the ease with which a sire's daughters will calve as first calf heifers, when compared to daughters of other sires. The EPD is expressed as a percent probability, with a higher value representing daughters with a higher probability of unassisted calving.

**(Stay)** Stayability The Stay EPD reflects differences in the probability that a sire's daughters will remain in production to produce 3 consecutive calves when retained as breeding heifers.

**(DOC)**...temperament and behavior of the sire's progeny

**(CW)** The Cow Weight EPD reflects differences in the mature weight of a sire's daughters. This is important as it is related to maintenance energy requirements.

**(YG):** Yield grade differences in yield grade score, which is a predictor of percent retail product. Smaller values suggest that progeny will have a better lean-to fat ratio.

**(CREA)** RibEye Area, The REA EPD reflects differences in rib-eye area carcass measures in feeder progeny.

Marbling (MARB) The MARB EPD reflects differences in carcass measures of marbling in feeder progeny, using USDA marbling scores.

**(CFAT):** Differences for fat thickness, in inches, for a carcass over the 12th rib, smaller numbers of fat thickness are preferable as excess fat can be detrimental to yield grade.

**(API)** All-Purpose Index Expressed in net dollars returned per cow exposed, evaluates sires being used on the entire cowherd bred to both first-calf heifers and mature cows with a portion of the daughters retained for breeding and the steers and remaining heifers fed and sold on a carcass grade and yield basis.

**(TI)** Terminal Index expressed in net dollar returned per cow exposed, evaluates the merit of sires when bred to mature cows and all progeny are fed and sold on carcass grade and yield basis.

All Bulls in the Sale are eligible for cost share money on bull purchases for qualified buyers through Kentucky & Tennessee.

## Kentucky

All the bulls in the sale qualify for cost share money in KY.

Most of the heifers in the sale will qualify for cost share money in KY. Check KY Dept. of Agriculture CAIP cost share program for details. and requirements at: [http://www.kyagr.com/marketing/documents/AM\\_Beef\\_HB-Sale-Requirements.pdf](http://www.kyagr.com/marketing/documents/AM_Beef_HB-Sale-Requirements.pdf)

## Tennessee

Based on the information we had at the time of printing all of the bulls in the sale will qualify for cost share money.

RYAN BETZELBERGER | Marketing Specialist, TAEP

Department of Agriculture Tennessee Agricultural Enhancement Program

Ellington Agricultural Center

P.O. Box 40627, Nashville, TN 37204 (Mail)

424 Hogan Road, Nashville, TN (Physical Address)

phone 615-837-5382 fax 615-401-7689

[ryan.betzelberger@tn.gov](mailto:ryan.betzelberger@tn.gov)

[www.tn.gov/agriculture](http://www.tn.gov/agriculture)

**DISCLAIMER:** Qualifying information is based on our research. Any ruling by either the KY or TN Department of Agriculture supersedes our research. We recommend you research the data yourself before purchasing an animal that you intend to apply for cost share money. The management of this sale shall not be held liable for any mistakes in our research. We have made these finding in good faith to the best of our ability.



Please note:

The EPD's were recorded in this catalog on September 15th 2025 The American Black Hereford Association updates the Bolt EPD's weekly, at the date of transfer to new owner they may not 100 % match what is posted in this catalog.

# BULLS

1

## SFC CONRAD 2370

APPROVED HERDSIRE

Sep 12, 2023

HB030317

2370

76%

BWF

Homozygous Black

Polled

JN BALDER D403

Sire: SFC BALDEES JEBEDIAH 2012

JN BALDEE 1412

3C's B34 OF RBT 210

Dam: SFC LUCY K F34

SBH LUCY 34

Birth	72
ratio	101
adj 205	623
ratio	93
adj 365	
ratio	

CED	BW	WW	YW	MILK	TM	CEM	STAY
13.4	-4.3	44	71	21	43	7.8	11.8
DOC	CW	YG	CREA	MARB	CFAT	API	TI
6.7	30	-0.06	0.49	0.20	-0.010	159.30	86.84

Consigned by: Sweeting Family Cattle

Here at Sweeting Family Cattle we like to offer aged bulls so you can take the bull home and put him to work right away. SFC Conrad 2370 has good pigment, good feet and is deep ribbed to use on any type of cow you have in the pasture.

ABHA  
GE-EPD



1



2

## HBLLC RALPH L007

APPROVED HERDSIRE	BCKST BLACK DYNASTY Z420 ET	Birth	67
Oct 08, 2023	Sire: TRIPLE T'S 34J TAZ BY DYN ET	ratio	
HB028162	TRIPLE TS CC SHOWTIME 455	adj 205	709
L007		ratio	
75.5125%	JN BALDER 8622	adj 365	985
BWF	Dam: TRIPLE T'S 38H MILLY BY 8622	ratio	
Homozygous Black	JN BALDEE 926		
Polled			

CED	BW	WW	YW	MILK	TM	CEM	STAY
10.1	0.6	58	90	26	55	5.0	12.2

DOC	CW	YG	CREA	MARB	CFAT	API	TI
14.3	15	0.05	0.55	0.31	0.010	158.70	92.48

Consigned by: Head Brothers Farm, LLC.

Here is a bull with a unique and remarkably pedigree. He has both the maternal King and legend of the breed, Black Dynasty on the sire side and an old-time breed and proven leader for growth on the bottom 8622. In the breed you won't find 2 more proven bulls. It's like the best of both worlds. His eye appeal makes him stand out. He ranks in the top 15% of the breed for milk and in the top 20% for docility. His carcass data is strong also as he ranks in the top 35% for CFat, ribeye, marbling, CW, and TI. He is a bull that is solid all the way around.

ABHA  
GE-EPD

3

## CFR BLACK TRUST 308 P

APPROVED HERDSIRE	JO TRUST FUND 7206	Birth	75
Mar 01, 2023	Sire: CHBH GWC 4R TRUSTED REVOLT 9006	ratio	105
HB028989	CHBH REVOLUTION A535 COO5	adj 205	524
308		ratio	
82.875%	GUYBRO CALVARY C70	adj 365	107
BWF	Dam: CFR MS BUBBLES G23 P	ratio	
Homozygous Black	SELB R W BUBBLES D014		
Polled			

CED	BW	WW	YW	MILK	TM	CEM	STAY
8.3	0.8	64	104	23	55	4.2	14.4

DOC	CW	YG	CREA	MARB	CFAT	API	TI
15.9	26	0.03	0.65	0.32	0	164.5	95.7

Consigned by: Hunt Farm

We purchased this bull last spring at the Black is the Color sale and used him to clean up our spring breeding. The bull has great numbers. We had a young bull coming on that just wasn't ready last spring. The only reason we are selling is that we no longer need him. He is ready for some heavy service and has a great disposition.

ABHA  
GE-EPD

4

## FLYNN KY BEST 624 OF 13E

APPROVED HERDSIRE	JO BLACK JACK 4217	Birth	66
Mar 08, 2024	Sire: TRIPLE T'S 13E BLK BARRON ET	ratio	100
HB030713	TRIPLE T's DOT DOT ET BY 8616	adj 205	600
624		ratio	
75.5625%	FLYNN KY 063 OF 00075 ET	adj 365	1040
BWF	Dam: FLYNN KY BEST 3119 OF 063	ratio	
Polled	FLYNN KY BEST 716 ETOF MT ET		

CED	BW	WW	YW	MILK	TM	CEM	STAY
11.7	-0.8	48	77	28	52	6.3	13.3

DOC	CW	YG	CREA	MARB	CFAT	API	TI
10.3	-5	0.04	0.15	0.19	-0.010	155.30	85.47

Consigned by: Wayne Flynn

This is one stout bull that is loaded with muscle. His pedigree is packed with proven genetics. He ranks in the top 10% of the breed for maternal traits. A key trait for longevity.

ABHA  
GE-EPD

# BULLS

5

## TRIPLE T'S 13M CAESAR BY Y702 ET

ABHA  
GE-EPD

APPROVED HERDSIRE	JN BALDER 6449	Birth	68
Mar 23, 2024	Sire: JN BALDER Y702	ratio	
HB032915	JN BALDEE 702	adj 205	793
13M		ratio	
80.875%	KCF BENNETT HARLAND X337 ET	adj 365	1141
BWF	Dam: TRIPLE TS CC SHOWTIME 455	ratio	
Homozygous Polled	TRIPLE T's FUTURE QUEEN ET		

CED	BW	WW	YW	MILK	TM	CEM	STAY
7.3	0.7	50	84	30	56	2.7	11.3
DOC	CW	YG	CREA	MARB	CFAT	API	TI
14.1	10	-0.05	0.48	0.15	-0.030	142.90	84.43

Consigned by: Triple T Farm

In offering this bull we have truly combined the best of the best. His sire is the legendary Y702 bull, and his flush dam is by far the best female that we have ever raised. We have loved this bull since he was born. I don't think you will find a more complete bull in growth, performance and structure. Based on his pedigree his longevity in the pasture should be remarkable. This is a special bull that will do great things. No chances here, everything about him is proven.



6

## FLYNN KY BEST 2724 OF 13E

ABHA  
GE-EPD

APPROVED HERDSIRE	JO BLACK JACK 4217	Birth	72
Aug 31, 2024	Sire: TRIPLE T'S 13E BLK BARRON ET	ratio	99
HB032747	TRIPLE T's DOT DOT ET BY 8616	adj 205	718
2724		ratio	106
80.375%	FLYNN KY 063 OF 00075 ET	adj 365	1067
BWF	Dam: FLYNN KY BEST 3819 OF 063	ratio	100
Homozygous Black	GZF JANE 0022		
Polled			

CED	BW	WW	YW	MILK	TM	CEM	STAY
11.1	0.1	48	76	28	52	5.9	12.9
DOC	CW	YG	CREA	MARB	CFAT	API	TI
13.5	-7	0.08	0.03	0.33	0.000	159.40	87.60

Consigned by: Wayne Flynn

He ranks in the top 15% of the breed for marbling and is in the top 10% for maternal traits. He is ready to go to work and travels well in the pasture. Good feet is a trait in a bull that is often overlooked. He can get the job done.



7

## FLYNN KY BEST 2824 OF 13E

ABHA  
GE-EPD

APPROVED HERDSIRE	JO BLACK JACK 4217	Birth	74
Sep 18, 2024	Sire: TRIPLE T'S 13E BLK BARRON ET	ratio	102
HB032748	TRIPLE T's DOT DOT ET BY 8616	adj 205	563
2824		ratio	94
78.875%	FLYNN KY 063 OF 00075 ET	adj 365	1085
BWF	Dam: FLYNN KY BEST 2116 OF 063	ratio	99
Homozygous Black	JN BALDEE 940		
Polled			

CED	BW	WW	YW	MILK	TM	CEM	STAY
8.8	-0.3	43	70	28	50	4.3	14.9
DOC	CW	YG	CREA	MARB	CFAT	API	TI
9.7	2	0.02	0.23	0.27	-0.020	156.60	83.67

Consigned by: Wayne Flynn

His dam has long been a strong producer for us. Her longevity and performance give us an idea of what to expect from this bull. We know what this bull will do in a breeding pasture.





## 8

### FLYNN KY BEST 3024 OF 3K

APPROVED HERDSIRE	JN BALDER Y702	Birth	73
Sep 22, 2024	Sire: TRIPLE T'S 3K KYRO BY Y702 ET	ratio	103
HB032750	TRIPLE T'S 505 BLACK JEANS	adj 205	638
3024		ratio	106
72.125%	TRIPLE T'S 13E BLK BARRON ET	adj 365	1102
BWF	Dam: FLYNN KY BEST 3122 OF 13E	ratio	101
Polled	FLYNN KY BEST 2019 OF 414		

CED	BW	WW	YW	MILK	TM	CEM	STAY
9.1	0.0	53	80	29	56	3.8	16.2
DOC	CW	YG	CREA	MARB	CFAT	API	TI
11.4	16	-0.11	0.64	0.08	-0.040	152.10	84.89

Consigned by: Wayne Flynn

His grand sire is the well-known Y702 bull that has been one of the best growth bulls to date in the breed. Stability means a lot in a breeding bull and this guy ranks in the top 10% of the breed. He should produce quality calves for many years.

ABHA  
GE-EPD



## COMMERCIAL BULL

## 9

### TRIPLE T'S 2FM BY FORTIFIED

Sep 07, 2024	NJW 84B 4040 FORTIFIED 238F	Birth	69
NR5452	Sire: SFCC TRM FORTIFIED 1024	ratio	102
2FM	SFCC TRM LILLIE 8078	adj 205	646
F1- 50%		ratio	
COMMERCIAL BULL	AAF PAYWEIGHT 8012	adj 365	1141
BWF	Dam: KNS TURNER/PAY WEIGHT 1490	ratio	
Polled	TURNER 9381 4893		

CED	BW	WW	YW	MILK	TM	CEM	STAY
12.0	-0.5	70	106	27	63	5.2	10.0
DOC	CW	YG	CREA	MARB	CFAT	API	TI
13.4	15	-0.04	0.68	0.32	0.000	164.20	101.70

Consigned by: Triple T Farm

This powerhouse of a bull is a commercial breeder's dream. He represents an outstanding combination of Angus and Hereford genetics. As a half blood he will do great things in a commercial herd. Heifer acceptable birthweight numbers.

ABHA  
GE-EPD



## How Does Fescue 7 Help Your Herd?

MAINTAINS APPETITE & BODY CONDITION

HAVE HEALTHIER CALVES

REDUCES FESCUE TOXICOSIS

LOWERS BODY TEMPERATURE





# FROZEN GENETICS

## 10 SOLID ROCK'S 12HD BY SOLOMON

5 Straws of Semen

Mar 18, 2020

HB019398

12HT

83.625

BWF

Homozygous Black

Homozygous Polled

MOHICAN BAR STAR REVVED UP 78A

Sire: TRIPLE T'S SOLOMON BY R.UP ET

TRIPLE T'S 442 OF 9405 X YANDA ET

JN BALDER 8475

Dam: HHF BRUISER'S DIANA D57

HHF HOMESTEADS ABANA A9

Birth	81
ratio	83
adj 205	622
ratio	
adj 365	963
ratio	

CED	BW	WW	YW	MILK	TM	CEM	STAY
10.4	-1.7	52	83	28	55	3.7	9.7
DOC	CW	YG	CREA	MARB	CFAT	API	TI
9.8	5	-0.02	0.59	0.32	0.010	157.30	92.64



LOT 10A, 10B & 10C He is the son of our well-known Solomon bull that is now deceased. Some of you may be familiar with Solomon. We think he was the best bull that we ever raised and HD12 is following in his footsteps. One advantage of HD12 over Solomon is that he is 83.625% Homozygous black and Homozygous polled. He is considered a Calving ease bull and his calves back up his EPD's as we have had no issues with birth, and he is safe for heifers. HD12 is not a flashy bull but one look at him and you can tell he is thick, deep and loaded with muscle. He is clean fronted and surefooted. He moves easily in the pasture and has good stride. If you look at his EPDs they are solid but not over the top. The performance of his calves proves his worth. We have several calves sired by him. He is now 5 years old, and this is why we wanted to wait to collect him until we had proven calves on the ground. With that being said, we know what his ability is. We all have seen many young bulls with great projected EPDs that are being promoted with no or very few calves on the ground and when the calves hit the ground they just don't perform as projected. That is why a proven bull is always worth a 2nd look. Those of you that know our program here at Triple T know that we breed cattle for the real world, not necessarily flashy cattle but cattle that will perform, stand the test of time and MAKE YOU MONEY.

(3 LOTS OF SEMEN / 5 STRAWS IN EACH LOT) Consigned by: Triple T Farm & Sherrod Farm

# Smith Black Herefords

## 12-14-25

### SALE DAY

AGSALEDAY.COM

# SIGNATURE

## Black Hereford

## Sale

Offering High-Caliber Black Hereford Genetics

Jacob: 641-521-9947    Marc: 641-521-0797



# Black is the Color



## 11th ANNUAL BLACK HEREFORD PRODUCTION SALE Saturday March 14, 2026 1pm EST

*Sale location:*  
**Triple T Farm**  
**2616 HWY 1664**  
**Nancy, KY. 42544**



*We would like to personally invite everyone to be with us for our 11th annual production sale hosted here at our farm. Watch for more information & details to come.*

*Tim & Teresa Tarter*

# FALL BRED HEIFERS

## 11

### TRIPLE T'S 72L LENA BY CATALYST

Sep 27, 2023	CRR 109 CATAPULT 320	Birth	67
NR5432	Sire: SFCC TRM CATALYST 6121	ratio	100
72L	TRM 1088 CHEYENNE 4094 ET	adj 205	534
F1-50%		ratio	101
BWF	S A V EXTENSION 6856	adj 365	836
Polled	Dam: TT MISS EVERELDA 148 531	ratio	100
	TT MISS EVERELDA 878W212 148		

CED	BW	WW	YW	MILK	TM	CEM	STAY
12.4	0.6	74	109	27	64	4.2	7.3
DOC	CW	YG	CREA	MARB	CFAT	API	TI
11.7	30	0.04	0.65	0.18	0.000	150.40	99.00

Consigned by: Triple T Farm

Excellent is the best way to describe this female. She ranks in the top 15% of the breed for weaning and top 20% for yearling weight. Top 1% for TM top 5% for CW and top 15% for TI. She is the kind that will make money for a commercial breeder or build some base genetics for a registered breeder. She sells AI safe in calf to Solomon and will calf before sale date.



## 12

### TRIPLE T'S 75L KIT BY CATALYST

Oct 08, 2023	CRR 109 CATAPULT 320	Birth	67
NR5434	Sire: SFCC TRM CATALYST 6121	ratio	97
75L	TRM 1088 CHEYENNE 4094 ET	adj 205	496
F1-50%		ratio	94
BWF	THOMPSON IN FOCUS T 468	adj 365	810
Polled	Dam: IN FOCUS 327	ratio	98
	THOMPSON MS OBJECT T 1119		

CED	BW	WW	YW	MILK	TM	CEM	STAY
12.7	0.6	68	104	25	60	5.0	8.4
DOC	CW	YG	CREA	MARB	CFAT	API	TI
11.2	26	0.01	0.60	0.19	-0.010	152.10	96.14

Consigned by: Triple T Farm

She stems from the well-known Angus bull In Focus. His offspring is known for producing great females with good maternal, traits. She is phenomenal in every way. She sells safe in calf to our herd bull 11J Cuda / HB021410. She will calf before sale day.



## 13

### TRIPLE T'S 76L LILAC BY CATALYST

Oct 08, 2023	CRR 109 CATAPULT 320	Birth	71
NR5435	Sire: SFCC TRM CATALYST 6121	ratio	103
76L	TRM 1088 CHEYENNE 4094 ET	adj 205	489
F1-50%		ratio	92
BWF	R&A HI VOLUME 111	adj 365	816
Polled	Dam: OBJECTIVE 265	ratio	99
	THOMPSON MS ALLIANCE T214		

CED	BW	WW	YW	MILK	TM	CEM	STAY
12.4	0.5	73	114	26	62	5.9	7.6
DOC	CW	YG	CREA	MARB	CFAT	API	TI
11.0	30	0.03	0.59	0.20	-0.010	153.10	99.58

Consigned by: Triple T Farm

They don't come much better than this female. She will be a great addition to add to a herd. Remarkable EPDs as she ranks in the top 15% of the breed for weaning, yearling and API. She also ranks in the top 2% for Maternal and top 5 % for CW She sells safe in calf to 11J Cuda HB021410 and will calf before sale date.





## 14 TRIPLE T'S 78L DI BY CATALYST

Oct 18, 2023	CRR 109 CATAPULT 320	Birth	67
NR5443	Sire: SFCC TRM CATALYST 6121	ratio	97
78L	TRM 1088 CHEYENNE 4094 ET	adj 205	510
F1-50%	AA R TEN X 7008 S A	ratio	96
BWF	Dam: SADDLE CREEK BLACKBIRD 640	adj 365	840
Polled	SADDLE CREEK BLACKBIRD 8089	ratio	102

CED	BW	WW	YW	MILK	TM	CEM	STAY
12.6	0.6	76	117	28	66	5.7	7.2
DOC	CW	YG	CREA	MARB	CFAT	API	TI
11.5	33	0.03	0.66	0.37	-0.010	162.60	105.20

Consigned by: Triple T Farm

You had better give this one a close look. Teresa had her marked as keep but I decided to let her go. She stems from the Angus Black Bird cow family, and she is special. Ranks in the top 1% for TM top 3% for CW and top 10% for weaning, yearling marbling, and TI. Don't let her slip away. She sells safe in calf to 11J Cuda HB021410 and will calf before sale day.



## 15 FLYNN KY BEST 1723 OF 13E

Jun 08, 2023	JO BLACK JACK 4217	Birth	71
HB029157	Sire: TRIPLE T'S 13E BLK BARRON ET	ratio	103
1723	TRIPLE T's DOT DOT ET BY 8616	adj 205	477
74%	FLYNN KY 063 OF 00075 ET	ratio	101
Black	Dam: FLYNN KY BEST 2416 OF 063	adj 365	785
Homozygous Black	JN BALDEE 1009	ratio	100
Homozygous Polled			

CED	BW	WW	YW	MILK	TM	CEM	STAY
9.6	-0.1	51	85	28	53	4.8	13.6
DOC	CW	YG	CREA	MARB	CFAT	API	TI
12.0	-1	0.01	0.30	0.30	0.000	159.80	89.36

Consigned by: Mattingly Cattle

A fall bred heifer that has the conformation and pedigree to be the pride of any herd. With an incredible spread from birth weight to weaning weight she will produce calves that will grow from day one. A look into her pedigree shows some of the top producing animals of the Black Hereford Breed. Pasture exposed 12/2/24 to HB021311 a Triple Your Miles son. Tested safe in calf for an October 2025 calving date.

## 16 MATTCA MISS TAZ 7L

Oct 18, 2023	BCKST BLACK DYNASTY Z420 ET	Birth	72
HB031583	Sire: TRIPLE T'S 34J TAZ BY DYN ET	ratio	107
7L	TRIPLE TS CC SHOWTIME 455	adj 205	495
84.4125%	JACKS DOMINATOR D802	ratio	108
BWF	Dam: TTTTDCG J30	adj 365	
Homozygous Black	VVF MISS AIRLINE 8319	ratio	
Polled			

CED	BW	WW	YW	MILK	TM	CEM	STAY
8.1	0.9	58	90	29	58	3.7	9.4
DOC	CW	YG	CREA	MARB	CFAT	API	TI
12.4	17	-0.07	0.68	0.19	-0.020	144.20	89.53

Consigned by: Mattingly Cattle

Miss Taz is a traditionally marked homozygous black Dynasty granddaughter. She has been bred to bring into anyone's herd a stout line up of Black Hereford and Hereford genetics. She is confirmed bred to HB021311 a Triple Your Miles son for a February 2026 calving date.

## 17 TRIPLE T'S 73L LYDIA BY CATALYST

Sep 28, 2023	CRR 109 CATAPULT 320	Birth	67
NR5433	Sire: SFCC TRM CATALYST 6121	ratio	100
73L	TRM 1088 CHEYENNE 4094 ET	adj 205	520
F1-50%	AAF PAYWEIGHT 8049	ratio	98
BWF	Dam: KNS PAYWEIGHT 10	adj 365	834
Polled	AAF PRINCESS 4010	ratio	101

CED	BW	WW	YW	MILK	TM	CEM	STAY
12.4	0.5	79	118	28	68	5.6	7.6
DOC	CW	YG	CREA	MARB	CFAT	API	TI
11.2	33	0.05	0.66	0.19	0.000	153.20	102.20

Consigned by: Triple T Farm

A beautiful made female and straight over the back. She is deep bodied and black to the ground. She is the right kind. Powerful EPDs with many in the top 15% of the breed. She was Al'd to Triple your Miles HB014436 on 12/17/24 then pasture exposed to Cuda/ HB021410, calving date will determine sire.



# FALL BRED HEIFERS / FALL BRED COW

## 18

### TRIPLE T'S 70L LUNA BY CATALYST

Sep 18, 2023	CRR 109 CATAPULT 320	Birth	69
NR5229	Sire: SFCC TRM CATALYST 6121	ratio	100
70L	TRM 1088 CHEYENNE 4094 ET	adj 205	499
F1-50%	BON VIEW NEW DESIGN 878	ratio	94
BWF	Dam: TT MISS RUBY BARBARA 262 231	adj 365	812
Polled	TT MISS RUBY BARBARA W262	ratio	98

CED	BW	WW	YW	MILK	TM	CEM	STAY
12.0	0.3	73	109	27	64	6.0	8.0
DOC	CW	YG	CREA	MARB	CFAT	API	TI
11.7	30	0.08	0.56	0.19	0.000	151.80	98.69

Consigned by: Triple T Farm

She is squared on her hip and very clean in the front. She sells safe in calf to the Trust son HB027346 who is homozygous Black. Calf will be black and have a 50% chance of being homozygous black expect calving date is early November.



## 19

### SF5L TILLY

Aug 10, 2023	TRIPLE T'S SOLOMON BY R.UP ET	Birth	
HB027930	Sire: SOLID ROCK'S 12HD BY SOLOMON	ratio	
5L	HHF BRUISER'S DIANA D57	adj 205	
83.1875%	JM CATTLE RESOLVE A746	ratio	
BWF	Dam: SF704	adj 365	
Homozygous Black	SIMS GA GIRL 1714	ratio	
Polled			

CED	BW	WW	YW	MILK	TM	CEM	STAY
11.1	-1.6	48	76	29	54	4.3	11.5
DOC	CW	YG	CREA	MARB	CFAT	API	TI
10.3	5	-0.03	0.54	0.30	0.000	158.50	89.67

Consigned by: Triple T Farm

Just an amazing, bred female. Her sire is the well-known 12HD bull who is a Solomon son. She sells safe in calf to Boyd's Houston 2124 P44526635 and will calf before sale day. Houston is a red Hereford but as she is homozygous black calf will be black. This should be a special calf and will be purebred.



# FALL BRED COW

## 20

### TRIPLE T'S 37 KALA BY CATSLYST

Dec 11, 2021	CRR 109 CATAPULT 320	Birth	68
NR4707	Sire: SFCC TRM CATALYST 6121	ratio	100
37T	TRM 1088 CHEYENNE 4094 ET	adj 205	536
F1-50%	THOMPSON OBJECTIVE T 327	ratio	100
BWF	Dam: THOMPSON OBJECTIVE 451	adj 365	854
Polled	THOMPSON MS FRONTIER AT314	ratio	101

CED	BW	WW	YW	MILK	TM	CEM	STAY
12.2	0.3	72	110	29	66	4.6	9.2
DOC	CW	YG	CREA	MARB	CFAT	API	TI
11.4	30	0.02	0.61	0.25	-0.010	158.50	100.50

Consigned by: Triple T Farm

She did a great job with her first calf. This female is long body and has a tight udder and great teat score. She sells safe in calf to Cuda 11J / HB021410 and will calf before sale day.





# Black Herefords At Their Best

## *Building The Breed of The Future !*



# ADAMS FARMS

**615.655.3352**

**Dixon Springs, TN**



*Semen Available*  
*DCD Leader 918*  
*HB014876*  
*Purebred Black Hereford*  
*92.575%*

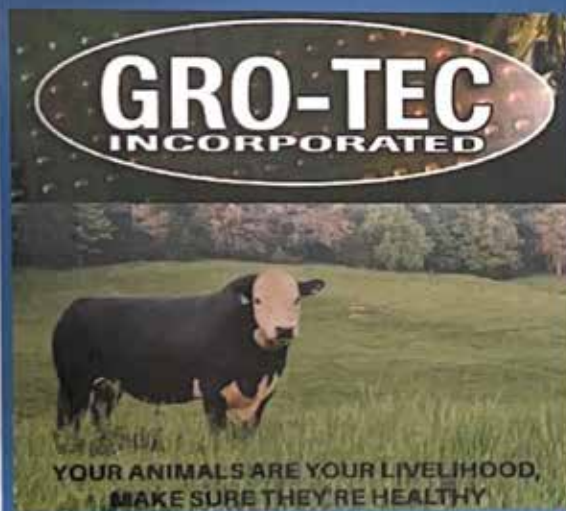


## Registered Herefords and Black Herefords

# Triple J Farms

675 Hwy 365 Booneville, MS 38829

Authorized Distributer of R & R Livestock Equipment  
 and Gro-Tec Minerals





# SPRING BRED HEIFERS

## 21 TRIPLE T'S 82L LEAHA BY CATALYST

Nov 16, 2023	CRR 109 CATAPULT 320	Birth	69
NR5436	Sire: SFCC TRM CATALYST 6121	ratio	103
82L	TRM 1088 CHEYENNE 4094 ET	adj 205	600
F1-50%	GB FIREBALL 672	ratio	113
BWF	Dam: KNS FIREBALL 390	adj 365	871
Polled	SADDLE CREEK PRIMROSE 523	ratio	105

CED	BW	WW	YW	MILK	TM	CEM	STAY
11.9	0.6	81	121	28	69	5.6	8.7
DOC	CW	YG	CREA	MARB	CFAT	API	TI
12.0	35	0.02	0.76	0.40	0.000	167.70	108.70

Consigned by: Triple T Farm

Folks we have raised and produced a lot of F1 females over the years, but I think none has been better than this female. She is spectacular in every way. She offers everything one could ask for in a performance female. She has head turning EPDs as she ranks in the top 20% of the breed for 8 traits. She sells safe in calf for a February calf to 12HD/ HB019398. Calf will be black and have a 50% chance of being homozygous black.



## 22 HBLLC M005 FRANCES BY 2618

Mar 09, 2024	FLYNN KY 063 OF 00075 ET	Birth	80
HB030265	Sire: FLYNN KY BEST 2618 OF 063	ratio	96
M005	FLYNN KY BEST 2714 OF 2429	adj 205	522
77.125%	CMF 212C EARLY LIGHT 338E	ratio	97
BWF	Dam: DG 338E 234 MIS GIGI H16	adj 365	622
Polled	SF MS MOVIN' ON 234	ratio	94

CED	BW	WW	YW	MILK	TM	CEM	STAY
12.1	-0.40	53	83	23	50	11.5	19.4
DOC	CW	YG	CREA	MARB	CFAT	API	TI
19.4	0	-0.03	0.43	-0.03	-0.010	141.70	82.44

Consigned by: Head Brothers Farm, LLC.

This heifer is deep and thick. Her grandsire is the well know Red Hereford Early Light bull. She ranks in the top 1% of the breed for docility. She sells safe in calf to 10K/ HB024589 for a spring calf. The 10K bull is a direct grandson of the legendary Solomon bull by Triple T Farms. Calf will have 50% chance of being homozygous black.



## 23 HUNTFM L31 SANDRA

Nov 19, 2023	CRR 109 CATAPULT 320	Birth	66
NR5351	Sire: SFCC TRM CATALYST 6121	ratio	100
L31	TRM 1088 CHEYENNE 4094 ET	adj 205	474
F1-50%	THOMPSON OBJECTIVE T 327	ratio	84
BWF	Dam: OBJECTIVE 1061	adj 365	838
Polled	THOMPSON MS ALLIANCE T 146	ratio	98

CED	BW	WW	YW	MILK	TM	CEM	STAY
12.0	0.3	69	109	24	58	5.2	8.3
DOC	CW	YG	CREA	MARB	CFAT	API	TI
11.3	30	0.05	0.55	0.19	-0.010	152.10	96.28

Consigned by: Hunt Farm

She is a looker. Notice the stellar pedigree in this female that includes Objective on the Angus side. She ranks in the top 25% for TI. She sells safe in calf to HB028756 or HB028989 for a spring calf. Date of birth will determine sire. Calf will be black and have 50% chance of being homozygous black.





## 24

### HUNTFM L32 LAURA

Nov 14, 2023	CRR 109 CATAPULT 320						Birth	65
NR5350	Sire: SFCC TRM CATALYST 6121						ratio	100
L32	TRM 1088 CHEYENNE 4094 ET						adj 205	629
F1-50%	AAF BRILLIANCE 420 6094						ratio	112
BWF	Dam: BRILLIANCE 289						adj 365	876
Polled	THOMPSON OBJECTIVE 891						ratio	103
CED	BW	WW	YW	MILK	TM	CEM	STAY	
12.3	0.1	70	102	27	62	4.3	7.6	
DOC	CW	YG	CREA	MARB	CFAT	API	TI	
11.0	25	0.01	0.61	0.21	-0.010	151.90	98.13	

Consigned by: Hunt Farm

There is a lot of growth in this female. She has a ratio of 112 on her weaning weight and 103 on her yearling. She sells safe in calf to HB028756 or HB028989 for a spring calf. Date of birth will determine sire. Calf will be black and have 50% chance of being homozygous black.



## 25

### FLYNN KY BEST 1624 OF 13E

Jun 03, 2024	JO BLACK JACK 4217					Birth ratio adj 205 ratio adj 365 ratio	75
HB032739	Sire: TRIPLE T'S 13E BLK BARRON ET						107
1624	TRIPLE T's DOT DOT ET BY 8616						469
67.75%	JM CATTLE 2ND REV X337 414						
BWF	Dam: FLYNN KY BEST 2019 OF 414						772
Polled	HUFFAKER EVER ENTENSE 950						
CED	BW	WW	YW	MILK	TM	CEM	STAY
10.5	0.4	59	94	29	59	4.4	10.5
DOC	CW	YG	CREA	MARB	CFAT	API	TI
11.2	5	-0.07	0.49	0.23	-0.020	153.60	92.50

Consigned by: Wayne Flynn

Sells safe in calf to a Y702 son 3K HB025670 for a spring calf.



## 26

### FLYNN KY BEST 1724 OF 1922

Jun 14, 2024	FLYNN KY 063 OF 00075 ET					Birth ratio adj 205 ratio adj 365 ratio	66
HB032740	Sire: FLYNN KY BEST 1922 OF 063						97
1724	JN BALDEE 1009						444
70.0625%	TRIPLE T'S 13E BLK BARRON ET						95
BWF	Dam: FLYNN KY BEST 1920 OF 13E						840
Homozygous Polled	FLYNN KY BEST 118 OF 063						97
CED	BW	WW	YW	MILK	TM	CEM	STAY
10.2	-0.6	46	75	28	51	5.3	13.4
DOC	CW	YG	CREA	MARB	CFAT	API	TI
12.5	-11	0.06	0.12	0.31	0.010	159.10	86.74

Consigned by: Wayne Flynn

She ranks in the top 15% of the breed for marbling. Safe in calf for a spring calf to 3K HB025670.

## 27

### FLYNN KY BEST 1924 OF 42J

Jun 20, 2024	JN BALDER Y702						Birth	73
HX002795	Sire: TRIPLE T'S JAGGER 42J BY Y702						ratio	107
1924	TRIPLE T'S 47F JEAN BY 8622						adj 205	486
76.425%	TRIPLE T'S 13E BLK BARRON ET						ratio	105
RWF	Dam: FLYNN KY BEST 2222 OF 13E						adj 365	906
Homozygous Polled	FLYNN KY BEST 2416 OF 063						ratio	105
CED	BW	WW	YW	MILK	TM	CEM	STAY	
7.6	0.7	54	83	28	55	3.5	13.6	
DOC	CW	YG	CREA	MARB	CFAT	API	TI	
12.1	8	-0.01	0.44	0.20	-0.010	155.70	86.89	

Consigned by: Wayne Flynn

She sells safe in calf for a spring calf to 3K HB025670

# SPRING BRED HEIFERS

## 28 FLYNN KY BEST 1824 OF 13E

Jun 16, 2024  
HB032741  
1824  
78.875%  
BWF

JO BLACK JACK 4217  
Sire: TRIPLE T'S 13E BLK BARRON ET  
TRIPLE T's DOT DOT ET BY 8616  
FLYNN KY 063 OF 00075 ET  
Dam: FLYNN KY BEST 2518 OF 063  
JN BALDEE 940

Birth 67  
ratio 95  
adj 205 443  
ratio 95  
adj 365 832  
ratio 96

CED	BW	WW	YW	MILK	TM	CEM	STAY
10.2	-0.2	48	78	27	51	5.3	14.8
DOC	CW	YG	CREA	MARB	CFAT	API	TI
10.7	-1	0.02	0.28	0.26	-0.010	159.60	86.46

Consigned by: Wayne Flynn

She sells safe in calf for a spring calf to 3K HB025670.



## 29 BBH MISS ROXIE 2412

Mar 15, 2024  
HB034942  
2412  
67%  
BWF  
Homozygous Polled

KNIGHT N GAIL 964  
Sire: BBH BLACK EYED JACK 914  
AA PALMER 502  
KJM HOMETOWN 10Y C21  
Dam: BBH MISS MURPHY 915  
DA CHARLOTTE EDEN 037

Birth 70  
ratio 104  
adj 205 571  
ratio 105  
adj 365 789  
ratio

CED	BW	WW	YW	MILK	TM	CEM	STAY
10.3	-0.3	68	119	26	61	3.5	14.0
DOC	CW	YG	CREA	MARB	CFAT	API	TI
13.3	26	-0.07	0.81	0.21	-0.020	166.00	98.30

Consigned by: Barrett Farm

Wow what a heifer if I could make them all like this one I would her dam was purchased from MTM Herefords in Calhoun GA and is the best F1 female we've ever owned. Miss Roxie with be a very stout cow and be a top producer for your herd She ranks in the top 25% in 9 EPDs. She is AI bred to C245 on 6/12/25, he ranks top 2% on milk This calf will be 77.5 % and have a great chance of being homozygous black and homozygous polled.



## 30 GLORIA 124T 2404

Dec 05, 2023  
HB034935  
2404  
73.125%  
BWF  
Homozygous Polled

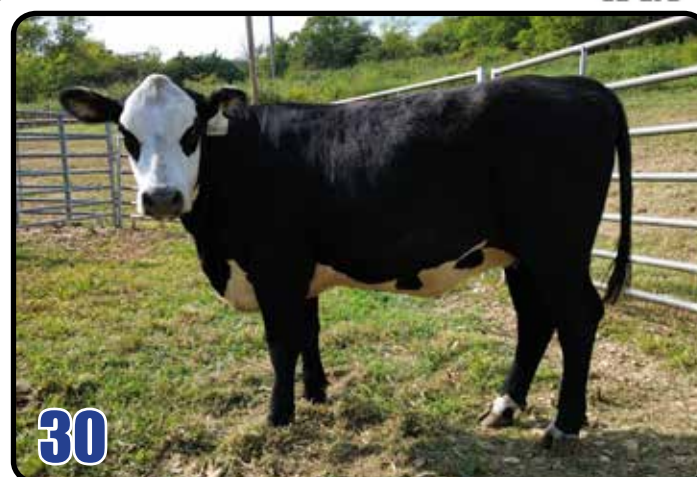
TRIPLE T'S 25E GUNSLINGER BY IS  
Sire: SF2002  
JM CAT DYNASTY MS 124T 472ET  
RR HATS OFF P606 R85B  
Dam: R&R ABYGALE R74D  
JWS MISS LOOKOUT A22

Birth 68  
ratio 98  
adj 205 530  
ratio 100  
adj 365 722  
ratio 100

CED	BW	WW	YW	MILK	TM	CEM	STAY
9.8	0.8	56	91	28	56	4.4	14.9
DOC	CW	YG	CREA	MARB	CFAT	API	TI
10.9	14	0.04	0.24	0.34	-0.030	165.30	92.25

Consigned by: Barrett Farm

Short marked with the big goggled eyes. She's AI bred to Y702 on 06/12/25 for a mid March calf. The phenotype and growth of this calf will be a great addition to the black Hereford breed. Banner winner in the making.





## 31

### SFC 2401

Mar 06, 2024	JN BALDER D403	Birth	65
HB031815	Sire: SFC BALDEES JEBEDIAH 2012	ratio	93
2401	JN BALDEE 1412	adj 205	644
78.35%	JMCC BF IMPRESSION 518	ratio	
BWF	Dam: SFC SECRET LOVE F49 ET	adj 365	971
Homozygous Polled	IRON LADY 124T	ratio	

CED	BW	WW	YW	MILK	TM	CEM	STAY
14.1	-2.3	48	75	20	44	7.9	15.1
DOC	CW	YG	CREA	MARB	CFAT	API	TI
8.8	21	0.04	0.42	0.33	-0.020	172.00	90.39

Consigned by: Sweeting Family Cattle

SFC Lovey 2401 is a more moderate Framed but very powerful made heifer. She is bred right for the Long haul. 2401 was AI'd to CA KT BLK Thunder 2354 for an early spring calf. Don't miss out on a great opportunity like this.



## 32

### HUNTFM L24 MAYE

Sep 26, 2023	CRR 109 CATAPULT 320	Birth	66
NR5343	Sire: SFCC TRM CATALYST 6121	ratio	99
L24	TRM 1088 CHEYENNE 4094 ET	adj 205	532
F1-50%	R&A HI VOLUME 111	ratio	94
BWF	Dam: OBJECTIVE 376	adj 365	852
Polled	THOMPSON OBJECTIVE 451	ratio	100

CED	BW	WW	YW	MILK	TM	CEM	STAY
12.9	0.4	74	116	26	62	5.6	8.3
DOC	CW	YG	CREA	MARB	CFAT	API	TI
11.1	30	0.02	0.62	0.25	-0.010	158.80	101.70

Consigned by: Hunt Farm

She ranks in the top 15% of the breed for weaning, yearling weight and TI. She sells safe in calf to HB028756 or HB028989 for a spring calf. Date of birth will determine sire. Calf will be black and have 50% chance of being homozygous black.



## 33

### AR PARIS 241

Apr 18, 2024	JO JACK HAMMER 7A ET	Birth	71
HB033296	Sire: JM GAME ON 7A 633 J086	ratio	101
241	JMCC R&R RITA P606 633	adj 205	
83.4375%	BR BELLE AIR E126 ET	ratio	
BWF	Dam: JM MS BELLE 1839 H054	adj 365	
Homozygous Black	JM MISS REVOLUTION CREED 1839	ratio	
Homozygous Polled			

CED	BW	WW	YW	MILK	TM	CEM	STAY
11.8	0.0	63	98	26	60	41	15.6
DOC	CW	YG	CREA	MARB	CFAT	API	TI
13.1	17	-0.08	0.77	0.25	-0.010	168.40	95.64

Consigned by: Acorn Ridge

This bred heifer is packed with genetic excellence. Pedigree includes, BR Belle Aire 6011, JO Jackhammer 74 ET, BR Anastasia 3023, and is sired by our herd bull JM Game On 7A 633 J086. She is bred to our 2023 Jr National champion AR Catapult 2304. You want a heifer with genetics; this gal is stacked!



# SPRING BRED HEIFERS

## 34

### SF5M MISS EMME

Mar 20, 2024  
HB030428  
5M  
75.8125%  
BWF  
Polled

TRIPLE T'S SOLOMON BY RUP ET  
Sire: SOLID ROCK'S 12HD BY SOLOMON  
HHF BRUISER'S DIANA D57  
TRIPLE T'S 30G GRIFFIN BY RUP ET  
Dam: TRIPLE T'S 18K ELLA BY GRIFFIN  
TRIPLE T'S BLACK MAGIC WOMAN

Birth 69  
ratio 102  
adj 205 575  
ratio  
adj 365 907  
ratio

CED	BW	WW	YW	MILK	TM	CEM	STAY
12.3	-1.4	57	89	30	60	4.3	10.5
DOC	CW	YG	CREA	MARB	CFAT	API	TI
11.3	12	0.05	0.46	0.32	0.010	161.70	94.80

Consigned by: Triple T Farm

Sire by a son of the immortal Solomon bull 12HD/ HB019398. She ranks in the top 20% of the breed for milk, and top 15% for marbling. She sells safe in calf to 2124 Houston for a spring calf.



## 35

### TRIPLE T'S 9JT BY VICTOR

Feb 03, 2024  
NR5429  
9JT  
F1-50%  
BWF  
POLLED

JMS VICTOR 967 355  
Sire: GOH VICTOR 355 601  
GOH LADY BJW 398  
BR JUNEAU 797-879  
Dam: BURTON&RAF BLACKCAP LADY 067  
BURTON&RAF BLACKCAP LADY 740

Birth 74  
ratio 103  
adj 205 584  
ratio 104  
adj 365 882  
ratio 99

CED	BW	WW	YW	MILK	TM	CEM	STAY
14.6	-0.9	67	99	31	64	7.1	6.0
DOC	CW	YG	CREA	MARB	CFAT	API	TI
11.7	25	0.02	0.64	0.44	0.000	165.00	130.80

Consigned by: Triple T Farm

Just a flat out powerhouse of a female that will be a big-time producer and is backed with some strong genetics. This is the kind you build a herd with. She sells safe in calf for an early spring calf to 12HD/ HB019398. Calf will be black and have a 50% chance of being homozygous black.



## 36

### TRIPLE T'S 86M IRS BY CATALYST

Jan 31, 2024  
NR5437  
86M  
F1-50%  
BWF  
Polled

CRR 109 CATAPULT 320  
Sire: SFCC TRM CATALYST 6121  
TRM 1088 CHEYENNE 4094 ET  
GIZMO FA 1339 658 0035  
Dam: GIZMO PRIDE E75 1144 1339  
GIZMO PRIDE 1144 814 9R9

Birth 68  
ratio 92  
adj 205 616  
ratio  
adj 365 894  
ratio

CED	BW	WW	YW	MILK	TM	CEM	STAY
14.0	-0.8	68	100	29	63	5.3	8.9
DOC	CW	YG	CREA	MARB	CFAT	API	TI
11.7	26	0.05	0.60	0.18	0.000	155.70	97.16

Consigned by: Triple T Farm

A beautifully marked female that will do great things in any herd. Notice the strong adjusted yearling weight. Lots of growth in this female. She has an extremely good CED that ranks in the top 15% of the breed. She sells AI safe in calf for an early spring calf to 12HD/ HB019398 Calf will be black and have a 50% chance of being homozygous black.





## 37 TRIPLE T'S 15JT BY VICTOR

Dec 17, 2023	JMS VICTOR 967 355	Birth	74
NR5387	Sire: GOH VICTOR 355 601	ratio	110
15JT	GOH LADY BJW 398	adj 205	623
F1-50%	RES DARK FIRE E612	ratio	104
BWF	Dam: BURTON&RAF RITA 044	adj 365	853
Polled	BURTON-RAF RITA 506	ratio	102

CED	BW	WW	YW	MILK	TM	CEM	STAY
13.6	-1.4	69	107	31	66	7.8	8.3
DOC	CW	YG	CREA	MARB	CFAT	API	TI
13.2	25	0.04	0.67	0.59	0.010	179.10	109.40

Consigned by: Triple T Farm

Wow, is the best way to describe this female. Heifers like her don't come around every day. Perfect conformation and she is going to have a beautiful udder and teats. Take her home and let her put some style in your herd. She sells AI safe in calf for early spring calf to 12HD HB019398 Calf will be black and have a 50% chance of being homozygous black.



## 38 TRIPLE T'S 16JT BY VICTOR

Dec 01, 2023	JMS VICTOR 967 355	Birth	71
NR5390	Sire: GOH VICTOR 355 601	ratio	103
16JT	GOH LADY BJW 398	adj 205	602
F1-50%	BURTON-RAF REALLY WINDY 505	ratio	113
BWF	Dam: JFS LASS 815	adj 365	810
Polled	JFS LASS 616	ratio	98

CED	BW	WW	YW	MILK	TM	CEM	STAY
14.4	-1.2	65	95	29	61	7.0	4.9
DOC	CW	YG	CREA	MARB	CFAT	API	TI
11.8	20	0.00	0.62	0.42	0.000	160.80	102.20

Consigned by: Triple T Farm

Her sire stems from the world renown Victor blood line and her angus dam's pedigree is just as impressive. Quality pedigrees produce quality cattle like this female. She is built like a tank. She sells AI safe in calf for a spring calf to 12 HD/ HB019398 Calf will be black and have a 50% chance of being homozygous black.



## 39 TRIPLE T'S 18JT BY VICTOR

Feb 18, 2024	JMS VICTOR 967 355	Birth	71
NR5389	Sire: GOH VICTOR 355 601	ratio	96
18JT	GOH LADY BJW 398	adj 205	537
F1-50%	RB 24-7 365-3270	ratio	96
BWF	Dam: JFS BLACKBIRD 901	adj 365	897
Polled	JFS BLACKBIRD 207	ratio	101

CED	BW	WW	YW	MILK	TM	CEM	STAY
15.2	-1.7	61	99	27	59	7.8	5.2
DOC	CW	YG	CREA	MARB	CFAT	API	TI
11.4	25	0.02	0.66	0.50	0.000	168.10	103.10

Consigned by: Triple T Farm

Tell me when you have ever seen a more beautiful female. She is just the ultimate female in every way. Her pedigree, EPDs, and appearance is what everybody looks for in a production female. She sells AI safe in calf to 12HD/ HB019398 for an early spring calf. Calf will be black and have a 50% chance of being homozygous black.



# SPRING BRED HEIFERS

## 40 TRIPLE T'S 23JT BY VICTOR

May 15, 2024	JMS VICTOR 967 355	Birth	70
NR5388	Sire: GOH VICTOR 355 601	ratio	101
23JT	GOH LADY BJW 398	adj 205	615
F1-50%	RB 24-7 365-3270	ratio	
BWF	Dam: JFS PRIDE 706	adj 365	921
Polled	JFS PRIDE 208	ratio	

CED	BW	WW	YW	MILK	TM	CEM	STAY
14.8	-1.4	60	91	27	57	7.3	5.1
DOC	CW	YG	CREA	MARB	CFAT	API	TI
11.3	24	0.00	0.65	0.45	-0.010	162.80	100.30

Consigned by: Triple T Farm

She had an extremely high-performance yearling weight. Just a marvelous female that will give you years of production and make you money. She also comes with impressive EPDs that rank in the top 15% for CED, top 4% for maternal, top 10% for CEM, and CW top 4% for marbling top 30% API and top 15% for TI. She sells safe in calf for a spring calf to a Y702 son 13M HB032915.

## 42 TRIPLE T'S 13JT BY VICTOR

Mar 25, 2024	JMS VICTOR 967 355	Birth	78
NR5431	Sire: GOH VICTOR 355 601	ratio	106
13JT	GOH LADY BJW 398	adj 205	614
F1-50%	RB 24-7 365-3270	ratio	
BWF	Dam: JFS BLACKCAP 705	adj 365	792
Polled	JFS BLACKCAP 227	ratio	

CED	BW	WW	YW	MILK	TM	CEM	STAY
13.8	-0.8	61	93	27	58	7.2	4.7
DOC	CW	YG	CREA	MARB	CFAT	API	TI
10.9	22	0.01	0.65	0.44	0.000	158.20	99.71

Consigned by: Triple T Farm

Motley face females like this one will help ensure that you get those calves that are heavily marked black which is what the market demands. This female has a high CED for easy birthing and ranks in the top 4% of the breed for marbling. She sells safe in calf for a spring calf to Houston 2124/ P44527635.



## 41 TRIPLE T'S 12JT BY VICTOR

Mar 14, 2024	JMS VICTOR 967 355	Birth	76
NR5430	Sire: GOH VICTOR 355 601	ratio	103
12JT	GOH LADY BJW 398	adj 205	621
F1-50%	RB 24-7 365-3270	ratio	
BWF	Dam: JFS MISS REVOLUTION ROSE 902	adj 365	890
Polled	JFS MISS REVOLUTION ROSE 409	ratio	

CED	BW	WW	YW	MILK	TM	CEM	STAY
14.1	-0.9	61	94	28	58	7.0	5.0
DOC	CW	YG	CREA	MARB	CFAT	API	TI
11.3	25	0.03	0.66	0.46	0.000	161.60	100.60

Consigned by: Triple T Farm

I have liked this female since she was a calf. To me she represents what a production cow should look like. Females like her will work for anyone whether you are breeding for Black Herefords or commercial animals. She sells AI safe in calf for a spring calf to 12HD/ HB019398 Calf will be black and have a 50% chance of being homozygous black.



## 43 TRIPLE T'S 54L ASHLEIGH BY TAZ

Nov 24, 2023	BCKST BLACK DYNASTY Z420 ET	Birth	63
HB029567	Sire: TRIPLE T'S 34J TAZ BY DYN ET	ratio	97
54L	TRIPLE TS CC SHOWTIME 455	adj 205	495
72.7875%	TRIPLE T'S 29E LEO BY BJ ET	ratio	100
BWF	Dam: TRIPLE T'S 57G FORTUNA BY 29E	adj 365	860
Homozygous Black	TRIPLE T'S TIMELESS LADY 676	ratio	100
Polled			

CED	BW	WW	YW	MILK	TM	CEM	STAY
9.3	-1.4	55	85	29	57	3.3	12.5
DOC	CW	YG	CREA	MARB	CFAT	API	TI
13.9	16	-0.06	0.64	0.18	-0.020	154.30	90.35

Consigned by: Triple T Farm

This Dynasty granddaughter has a lot going for her. She is very smooth in her build and has some excellent numbers. She is a MSUD carrier which has no bearing on her health, performance or the health of her offspring. Any geneticist will tell you that one does not cull superior animals because of a carrier status of a defect. She will do a great job in any herd. She sells safe in calf for an early spring calf AI to Generator P44196588 sexed semen for heifer, then pasture exposed to Houston 2124/ P44527635 Calving date will determine sire. Calf will be black.



## 44 TRIPLE T'S 47T JADE BY CATALYST

Oct 07, 2021  
NR5035  
47T  
F1-50%  
BWF  
Polled

CRR 109 CATAPULT 320  
Sire: SFCC TRM CATALYST 6121  
TRM 1088 CHEYENNE 4094 ET

R&A HI VOLUME 111  
Dam: OBJECTIVE 163  
THOMPSON MS DIRECTIVE MT205

Birth 69  
ratio 100  
adj 205 481  
ratio 98  
adj 365 836  
ratio

CED	BW	WW	YW	MILK	TM	CEM	STAY
13.3	-1.1	66	101	27	59	5.6	6.5
DOC	CW	YG	CREA	MARB	CFAT	API	TI
10.0	21	0.03	0.49	0.19	-0.010	151.00	96.56

Consigned by: Triple T Farm

This female did a great job with her first 2 calves. Her first bull calf sold a year ago for \$5,000 and we weaned an outstanding bull calf this spring from her. Her fertility and maternal traits are proving her to have a very good calving interval. She sells safe in calf for a late January calf to Houston 2124 / P44527635



## 45 TRIPLE T'S 17G GOLDIE BY HTOWN

Mar 17, 2019  
HX002001  
17G  
75%  
RWF  
Homozygous Polled

NJW 73S W18 HOMETOWN 10Y ET  
Sire: FF 74-51 HOMETOWN B411  
CH MOLLY 0018

COX UPSHOT 293S A06X  
Dam: GZF ANNABELLE 202 C263  
DFF 719T CANDACE 202

Birth 70  
ratio 101  
adj 205 670  
ratio 109  
adj 365 909  
ratio 104

CED	BW	WW	YW	MILK	TM	CEM	STAY
9.5	1.3	70	109	29	66	3.0	10.9
DOC	CW	YG	CREA	MARB	CFAT	API	TI
10.2	19	-0.12	0.89	0.27	-0.020	157.90	98.87

Consigned by: Triple T Farm

This Hometown daughter has done a remarkable job for us. Here calving interval of 366 days is hard to beat. Fertile cows like this that breed regularly are what makes you money. She should have good longevity and many years of production. She has been a special female for us. Her EPDs are top shelf, and her milking ability has allowed her offspring to excel and have great performance data. She sells AI safe in calf to 12HD/ HB019398 for a spring calf. Calf will be black.



8160 North Hwy 27  
Science Hill, KY  
**606-423-3421**

## 46

### JHC IZZABELLE Z205

Dec 20, 2022	JO SONIC BOOM 7326	Birth	73
HB025926	Sire: JCR'S SONIC CRUSH 015	ratio	
Z205	JCR'S MARYANNE PEPPER 704	adj 205	579
78.3%	SELB 8622 CROSSFIRE D008	ratio	
BWF	Dam: BBF CROSSFIRE LANGTON LACY 9128	adj 365	829
Homozygous Polled	JRK 731 LANGTON LACY 268	ratio	

CED	BW	WW	YW	MILK	TM	CEM	STAY
10.6	-1.3	49	70	24	48	5.3	14.5
DOC	CW	YG	CREA	MARB	CFAT	API	TI
12.5	1	0.01	0.40	0.28	0.000	160.90	88.05

Consigned by: JH Cattle

If you're looking for a nice, young moderate framed cow (with just the right amount of chrome) with a potential herd bull by her side then Izzabelle is what you're looking for. She did a fantastic job raising her first calf. Sells open and ready to breed to the bull of your choice. Sired by JCR's SONIC CRUSH 015 (HB018076) - Ol' Digger.

## 46A

### JHC IVAN 7508

Jul 23, 2025	JO TRUST FUND 7206	Birth	81
HB035685	Sire: JCR'S DOUBLE TRUST CAT 107 ET	ratio	106
7508	JMCC VCF MS CAT 1217 6105ET	adj 205	
81.775%	JCR'S SONIC CRUSH 015	ratio	
BWF	Dam: JHC IZZABELLE Z205	adj 365	
Homozygous Black	BBF CROSSFIRE LANGTON LACY 9128	ratio	
Homozygous Polled			

CED	BW	WW	YW	MILK	TM	CEM	STAY
7.4	0.5	56	86	24	52	2.8	12.5
DOC	CW	YG	CREA	MARB	CFAT	API	TI
14.4	14	-0.04	0.58	0.19	-0.020	148.80	87.74

Consigned by: JH Cattle

WOW!!!! Look at this guy!!!! Homo black and homo polled!!!! Sired by the national champion bull: JCR's DOUBLE TRUST CAT 107 ET (HB010677), "Bugsy". Ivan will make you an outstanding herd bull or bring him back to the sale next year and get your money back!!!



## 47

### TRIPLE T'S 31L LAILAH BY ILR

Sept 27, 2023	C CJC ILR REGAL 3174 ET	Birth	67
NR5228	Sire: F5 ILR REGAL 513C	ratio	99
31L	IRON LADY R001	adj 205	605
F1-50%	MYTTY IN FOCUS	ratio	
BWF	Dam: TRIPLE T'S FOCUS OF PROSE 59	adj 365	875
Polled	HUFFAKER PRIMROSE 021	ratio	

CED	BW	WW	YW	MILK	TM	CEM	STAY
13.9	-1.1	74	122	32	70	4.7	12.2
DOC	CW	YG	CREA	MARB	CFAT	API	TI
15.2	24	0.11	0.52	0.46	0.020	182.60	109.30

Consigned by: Triple T Farm

Putting this female in the sale was a hard decision. You won't find one better, her pedigree is as stacked as you will find. Perfect teats and udders and just a great confirmation on this animal. She is power packed in every way and her EPDs are off the charts as she ranks in the top of the breed for many traits. Whoever purchases this female will have something special added to their program. Don't let her slip away. She sells with a heifer calf by her side sired by our semen bull 12HD.

## 47A

### TRIPLE T'S 36N NILA BY 12HD

Sept 05, 2025	TRIPLE T'S SOLOMON BY R.UP ET	Birth	64
HB035940	Sire: SOLID ROCK'S 12HD BY SOLOMON	ratio	100
36N	HHF BRUISER'S DIANA D57	adj 205	
66.8125%	F5 ILR REGAL 513C	ratio	
BWF	Dam: TRIPLE T'S 31L LAILAH BY ILR	adj 365	
Homo Black Pending	TRIPLE T'S FOCUS OF PROSE 59	ratio	
Homo Polled Pending			

CED	BW	WW	YW	MILK	TM	CEM	STAY
12.1	-1.4	63	102	30	63	4.2	11.0
DOC	CW	YG	CREA	MARB	CFAT	API	TI
12.6	14	0.04	0.55	0.39	0.020	169.90	101.00





## 48 TRIPLE T'S 23 LILA BY CATSLYST

Jan 23, 2022	CRR 109 CATAPULT 320	Birth	68
NR4706	Sire: SFCC TRM CATALYST 6121	ratio	
23T	TRM 1088 CHEYENNE 4094 ET	adj 205	586
F1-50%	THOMPSON OBJECTIVE T 327	ratio	
BWF	Dam: OBJECTIVE 1084	adj 365	881
Polled	THOMPSON MS DESTINY T 1017	ratio	

CED	BW	WW	YW	MILK	TM	CEM	STAY
12.1	0.0	70	107	28	63	4.7	8.2
DOC	CW	YG	CREA	MARB	CFAT	API	TI
11.4	30	0.03	0.58	0.19	-0.010	152.20	97.78

Consigned by: Triple T Farm

This is an outstanding female that has a lot of capacity. She did a wonderful job with her first calf that sold this year for \$5,000. Females like her will make you money. She sells open and ready to breed to the bull of your choice. If you are looking for a future herd bull, she has it by her side. He is a spectacular bull calf sired by our 11J Cuda bull HB021410. Notice the bulk and thickness on this calf born on 7/8/25.

## 49 TRIPLE T'S 74L LOLA BY CATALYST

Sep 30, 2023	CRR 109 CATAPULT 320	Birth	70
NR5230	Sire: SFCC TRM CATALYST 6121	ratio	102
74L	TRM 1088 CHEYENNE 4094 ET	adj 205	480
F1-50%	QUAKER HILL RAMPAGE 0A36	ratio	90
BWF	Dam: CIRCLE G QUEEN 1736	adj 365	842
Polled	MGR RITA 4076	ratio	102

CED	BW	WW	YW	MILK	TM	CEM	STAY
12.0	0.7	82	128	23	64	4.0	10.3
DOC	CW	YG	CREA	MARB	CFAT	API	TI
11.5	38	-0.03	0.87	0.25	-0.010	164.30	105.80

Consigned by: Triple T Farm

This is a thick and deep bodied female. As she matures, she will have lots of volume. She is backed by some outstanding EPDs and ranks in the top 35% for CED, top 4% for weaning and yearling, top 1% for TM and CW, top 30% for API and top 10% for TI. She sells with a 9/4/25 commercial bull calf by her side sired by Solomon/ HB011371

## 48A TRIPLE T'S 23N NOVA BY CUDAS

Jul 08, 2025	BEHM 100W CUDAS 504C	Birth	67
HB035880	Sire: CIRCLE S 11J BLACK CUDAS	ratio	
23N	TRIPLE T's ROYAL LADY OF 8616	adj 205	
68.75%	SFCC TRM CATALYST 6121	ratio	
BWF	Dam: TRIPLE T'S 23 LILA BY CATSLYST	adj 365	
Polled	OBJECTIVE 1084	ratio	

CED	BW	WW	YW	MILK	TM	CEM	STAY
12.4	-0.6	69	110	28	66	4.2	11.0
DOC	CW	YG	CREA	MARB	CFAT	API	TI
10.9	26	-0.01	0.61	0.26	-0.020	164.10	100.40

## 49A TRIPLE T'S 34N BY 69E

Sep 04, 2025	MOHICAN BAR STAR REVVED UP 78A	Birth	62
NX035941	Sire: TRIPLE T'S SOLOMON BY RUP ET	ratio	
34N	TRIPLE T'S 442 OF 9405 X YANDA ET	adj 205	
commercial	SFCC TRM CATALYST 6121	ratio	
RWF	Dam: TRIPLE T'S 74L LOLA BY CATALYST	adj 365	
Polled	CIRCLE G QUEEN 1736	ratio	

CED	BW	WW	YW	MILK	TM	CEM	STAY
DOC	CW	YG	CREA	MARB	CFAT	API	TI



## 50

### SAF SWEET EBONY 11AK

May 23, 2022	TRIPLE T's 354 BY Z420	Birth	83
HB025948	Sire: SWEET GLOW 39G	ratio	99
11AK	GUYBRO RADIANT LADY E033	adj 205	
85.5375%		ratio	
BWF	FF 74-51 HOMETOWN B411	adj 365	
Polled	Dam: GZF B411 EBONY E321	ratio	
	GZF B113 BULLET		

CED	BW	WW	YW	MILK	TM	CEM	STAY
8.9	1.1	62	98	31	62	3.5	10.6
DOC	CW	YG	CREA	MARB	CFAT	API	TI
13.5	18	-0.02	0.61	0.24	-0.010	151.50	92.99

Consigned by: Small Acres Farm

Check out this moderate framed female that is stout to the ground, with a level topline. This one is hard to part with and goes back to our GZF lineage. Our loss is your gain. PE to SAF 1217 Vadar ET (HB025953) 9-1-25 - sale date.

## 50A

### SAF EVADAR

May 30, 2025	JO DARK VADAR 7B ET	Birth	69
HB035839	Sire: SAF 1217 VADAR ET	ratio	
7N	JM CATTLE MISS X51 1217 464	adj 205	
86.59375%		ratio	
BWF	SWEET GLOW 39G	adj 365	
Homo Black Pending	Dam: SAF SWEET EBONY 11AK	ratio	
Homo Polled Pending	GZF B411 EBONY E321		

CED	BW	WW	YW	MILK	TM	CEM	STAY
12.0	-0.6	57	90	29	58	5.6	14.3
DOC	CW	YG	CREA	MARB	CFAT	API	TI
11.0	15	-0.03	0.62	0.29	-0.010	166.70	93.59

Consigned by: Small Acres Farm

This stout bull calf is full of potential. Sure footed and stout to the ground. DNA testing pending.

## 51

### SAF SALLY SUE

Aug 27, 2021	JO BLACK REVOLUTION 5302	Birth	82
HB021321	Sire: F&S BLACK VEGAS	ratio	113
1036	F&S GUS 9790	adj 205	660
82.5625%		ratio	
BWF	JO BLACK JACK 4217	adj 365	
Homozygous Black	Dam: SAF 036 JACKIE 8036	ratio	
Homozygous Polled	TRIPLE T'S 036 WINTER LADY		

CED	BW	WW	YW	MILK	TM	CEM	STAY
9.0	1.4	53	84	27	54	3.5	10.2
DOC	CW	YG	CREA	MARB	CFAT	API	TI
12.4	8	0.02	0.44	0.23	0.000	143.30	86.70

Consigned by: Small Acres Farm

This traditionally marked, homo black, homo polled percentage female is one to look at. She has a lot of depth and is easy fleshing. PE to SAF 1217 Vadar ET (HB025953) 9-1-25 to 9-23-25.

## 51A

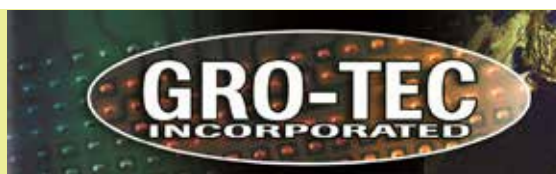
### SAF DARK SALLY SUE

May 15, 2025	SAF BLACK DON 857C ET	Birth	70
HB035890	Sire: SAF DARK DON	ratio	
3N	KELLEYS BONNY ANN	adj 205	
81.53125%		ratio	
BWF	F&S BLACK VEGAS	adj 365	
Polled	Dam: SAF SALLY SUE	ratio	
	SAF 036 JACKIE 8036		

CED	BW	WW	YW	MILK	TM	CEM	STAY
10.8	0.6	54	88	25	52	4.7	11.3
DOC	CW	YG	CREA	MARB	CFAT	API	TI
10	-0.03	0.50	0.21	0.21	-0.010	151.60	88.04

Consigned by: Small Acres Farm

This heifer calf has a clean look, level across the top and is ready for you to take the the show ring next summer.



## \* FALL 2025 ALL SPECIES PROMOTION\*

Groups 1, 2, 3, & 4 Apply—Swine/Beef/Sheep/Goat/Poultry/Dairy

**PURCHASE 24 BAGS OF THE SAME PRODUCTS AND GET 1 BAG FREE!**

**OR**

**PURCHASE 50 BAGS OF PRODUCTS AND GET 1 AG MINERAL FEEDER 1/3 OFF \$230.00 RETAIL PRICE!**

The product may be plain or medicated but must be the same.

Examples: Purchase 24 bags of Stocker 7—Receive 1 free bag of Stocker 7

Purchase 24 bags of Beefmaker 6/Rumensin—Receive 1 free bag of Beefmaker 6/Rumensin

10% on ton or more of Gold Buckle Lick Tub only

This offer is good on orders delivered by September 15, 2025, through November 21, 2025.

All orders MUST be delivered by November 21, 2025, to receive the promo.

Contact your Gro-Tec, Inc. sales representative for more information.

\*Accounts must be current for the special to apply.

\*\*Unfortunately, Custom Products do not apply.

Call Tim Tarter for more information: 606-305-2289 Tripleblackherefords@gmail.com



**52****SF4L BECCA**

Aug 08, 2023

HB027924

4L

85.6%

BWF

Homozygous Black

Polled

TRIPLE T'S SOLOMON BY R.UP ET  
 Sire: SOLID ROCK'S 12HD BY SOLOMON  
 HHF BRUISER'S DIANA D57

TRIPLE T'S 25E GUNSLINGER BY IS  
 Dam: SF7  
 RHF BUCKEYE JMS 158

Birth	63
ratio	95
adj 205	465
ratio	90
adj 365	847
ratio	101

CED	BW	WW	YW	MILK	TM	CEM	STAY
12.4	-1.0	49	85	25	51	5.6	9.4
DOC	CW	YG	CREA	MARB	CFAT	API	TI
10.1	8	0.02	0.46	0.27	0.000	155.10	88.84

Consigned by: Triple T Farm

A high % female that has a strong future in front of her. She sells with one of the most beautiful heifer calves that I have seen in a while that is purebred. The calf HB035981 is sired by the well-known Mago bull HB019640. Calf is homozygous black.

**52A****TRIPLE T'S 38N MYRA BY MAGO**

Sep 08, 2025

HB035981

38N

Purebred 88.8%

BWF

Homo Black Pending

Homo Polled Pending

BF JM CATAPULT 1801 ET  
 Sire: SNS JM 1801 EL MAGO H006  
 BCC MISS MAX VICTORIA D32

SOLID ROCK'S 12HD BY SOLOMON  
 Dam: SF4L BECCA  
 SF7

Birth	64
ratio	100
adj 205	
ratio	
adj 365	
ratio	

CED	BW	WW	YW	MILK	TM	CEM	STAY
9.3	-0.1	54	89	22	50	2.4	8.9
DOC	CW	YG	CREA	MARB	CFAT	API	TI
10.9	9	0.06	0.32	0.21	0.000	145.90	87.91



*Source for Genetic*  
**EXCELLENCE**  
*Sale*

**Tennessee**  
  
**Black Hereford Association**

**April 11, 2026 12:00 noon**  
**Ron Ramsey Regional Ag Center**  
**Blountville, TN**

# OPEN HEIFERS

## 53

### HBLLC FRANCES M007 BY REGAL

May 13, 2024	C CJC ILR REGAL 3174 ET	Birth	82
HB030839	Sire: F5 ILR REGAL 513C	ratio	
M007	IRON LADY R001	adj 205	543
81.8125%		ratio	
BWF	JO COMMANDER 8321	adj 365	782
Polled	Dam: SEVEN SPRINGS SALEM	ratio	
	HF SALEMS FOCUS 340		

CED	BW	WW	YW	MILK	TM	CEM	STAY
12.5	-0.9	55	87	26	55	3.1	12.6
DOC	CW	YG	CREA	MARB	CFAT	API	TI
13.8	6	-0.05	0.53	0.12	-0.010	154.60	88.35

Consigned by: Head Brothers Farm, LLC.

This is a more mature heifer that should do a great job when she has her first calf. We felt she was too young to breed last spring, so we held her open till now and she is ready to breed to a bull of your choice. By being a little older when she calves and more mature, she should breed back more quickly than your traditional first calf females. Her sire Iron Lake Regal P43664313 and his progeny record is 2<sup>nd</sup> to none.



## 54

### JHC MISS MARILYN MONROE 9409

Sep 05, 2024	JCR'S SONIC CRUSH 015	Birth	81
HB032029	Sire: JHC TATANKA Z203	ratio	119
9409	BBF CROSSFIRE TRIPLE L 9168	adj 205	534
79.275%		ratio	100
Homozygous Black	JMCC BF IMPRESSION 518	adj 365	
Polled	Dam: VCF MISS IMPRESSION 826	ratio	
	JOSN BALDEE J102		

CED	BW	WW	YW	MILK	TM	CEM	STAY
9.5	-0.1	47	77	23	47	5.1	15.2
DOC	CW	YG	CREA	MARB	CFAT	API	TI
11.0	12	0.06	0.47	0.43	0.010	167.70	89.32

Consigned by: JH Cattle

When Tim said bring me some good heifers, we did just that. Don't let this one pass you by!! Short marked, black to the ground with goggle eyes!! Big ribbed and solid all around. Marked and built just like you want them!! Sired by JHC TATANKA (HB025466) a son of our herd bull Ol' Digger. We used Tatanka for 1 year and man did he produce!! Take her home and breed her to the bull of your choice.



## 55

### AR MIGHTY IVANKA 124T

Sep 12, 2024	AR CATS NIGHT TRAIN ET	Birth	73
HX002968	Sire: AR CATAPULT 2304	ratio	104
2409	DM OPH DESTINY 08F ET	adj 205	
Purebred 92.1%		ratio	
RWF	NJW 79Z 22Z MIGHTY 49C ET	adj 365	
Polled	Dam: JM MS MIGHTY MOUSE 124T 8202 ET	ratio	
	IRON LADY 124T		

CED	BW	WW	YW	MILK	TM	CEM	STAY
10.1	0.8	65	99	21	55	1.8	10.0
DOC	CW	YG	CREA	MARB	CFAT	API	TI
12.0	8	-0.14	0.72	0.01	-0.030	140.90	89.20

Consigned by: Acorn Ridge

This show prospect HX heifer has an exceptional pedigree. She goes back to her Great dam Iron Ton Lady 124T and sire AR Catapult 2304 2023 Jr National champion pure bred bull. This heifer is the complete package with extra length.





## 56

### JHC MISS GERALDINE 7405

Jul 20, 2024  
HX031698  
7405  
85.25%  
RWF  
Polled

JO SONIC BOOM 7326  
Sire: JCR'S SONIC CRUSH 015  
JCR'S MARYANNE PEPPER 704  
  
JM CATTLE RESOLVE A746  
Dam: ASFARM A746 GRETA FATE 2107  
DJF R16 GRETA BENNETT

Birth 52  
ratio 79  
adj 205 539  
ratio  
adj 365 766  
ratio

CED	BW	WW	YW	MILK	TM	CEM	STAY
14.0	-3.2	48	67	26	52	6.8	11.3
DOC	CW	YG	CREA	MARB	CFAT	API	TI
12.8	-4	-0.05	0.42	0.21	-0.010	158.30	89.07

Consigned by: JH Cattle

Big, stout, google-eyed HX heifer. High quality with looks to burn! Her dam is out of the famous Resolve bull that is known for producing outstanding females. Miss Geraldine will make a front pasture cow for any farm. She ranks in the top 5% in the breed for birthweight. Sells open.



## 57

### FF AMERICAN CROSSFIRE 2559

Dec 05, 2024  
NR5455  
2559  
F1-50%  
BWF  
Polled

SPRING COVE CROSSFIRE 26H  
Sire: BOYD SMR CROSSFIRE 2059  
SITZ SHAUNA 220H  
  
ECR 628 IVYS ADVANCE 8923 ET  
Dam: WOMACK AMERICAN LADY 1275 ET  
WOMACK AMERICAN LADY 975 ET

Birth 68  
ratio  
adj 205  
ratio  
adj 365  
ratio

CED	BW	WW	YW	MILK	TM	CEM	STAY
12.3	-0.3	79	132	30	73	5.7	8.7
DOC	CW	YG	CREA	MARB	CFAT	API	TI
12.9	29	-0.04	0.95	0.50	0.010	177.30	112.70

Consigned by: F & F Farm

A tremendous F1 heifer out of Boyd Beef and a dam out of Womack Cattle Company genetics that needs no introduction. This soggy female has been a standout since birth and one that is difficult to let go. Put her in the show ring or make her a donor/brood cow. Study her EPDs and specifically the growth and power she brings. Retaining the right to one flush at buyer convenience and seller expense.



## 58

### SIMS LADY STRIKER 8416 M451

Sep 13, 2024  
HB032790  
M451  
Purebred 89.9%  
BWF  
Polled

TFR KU ROLL THE DICE 1326  
Sire: CH HIGH ROLLER 756 ET  
CH GOLDEN CAT 4016 1ET  
  
JO LIGHTNING A923  
Dam: SIMS GA PEACH STRIKER 8416  
RR MISS DEMAND R84B

Birth 71  
ratio 109  
adj 205 556  
ratio  
adj 365  
ratio

CED	BW	WW	YW	MILK	TM	CEM	STAY
4.8	2.8	74	112	33	71	-0.9	10.5
DOC	CW	YG	CREA	MARB	CFAT	API	TI
11.1	11	-0.17	0.82	-0.10	-0.030	129.10	89.54

Consigned by: F & F Farm

This Purebred heifer has the phenotype and style that will enhance any farm. The decision to sell is the toughest choice to date and bringing the best is what we have done. Out of a Dam of Supremacy from Sims Black Herefords. She has raised many top performers in the breed. She sells open and ready to breed to the bull of choice in December. Retaining the right to one flush at buyer convenience and seller expense.



## 59

### AR MISS GEORGIA 2407

Sep 21, 2024	JO JACK HAMMER 7A ET	Birth	66
HB035748	Sire: JM GAME ON 7A 633 J086	ratio	103
2707	JMCC R&R RITA P606 633	adj 205	
84.375%	BF JM CATAPULT 1801 ET	ratio	
BWF	Dam: AR CATS CUP CAKE OF 1801 2184	adj 365	
Polled	AUBREY'S 90W WILLA 1F	ratio	

CED	BW	WW	YW	MILK	TM	CEM	STAY
8.4	0.7	62	95	24	55	1.5	11.3
DOC	CW	YG	CREA	MARB	CFAT	API	TI
11.3	13	-0.07	0.66	0.15	-0.020	147.80	90.58

Consigned by: Acorn Ridge

This heifer sells as open. With some impressive jeans to offer. Granddaughter of JM Catapult 1801, JO Jackhammer 7A ET. She offers a sound structure with added length and a maternal design. On her way to be a great momma!



## 60

### JHC MISS TANYA TUCKER 9411

Sep 09, 2024	JCR'S SONIC CRUSH 015	Birth	72
HB032028	Sire: JHC TATANKA Z203	ratio	106
9411	BBF CROSSFIRE TRIPLE L 9168	adj 205	542
81.575%	SELB 8622 CROSSFIRE D008	ratio	101
BWF	Dam: BBF 8622 CROSSFIRE 9038	adj 365	
Homozygous Black	SF MIDNITE LADY 532	ratio	
Polled			

CED	BW	WW	YW	MILK	TM	CEM	STAY
10.8	-1.3	49	69	22	46	5.6	13.6
DOC	CW	YG	CREA	MARB	CFAT	API	TI
13.6	1	-0.09	0.55	0.14	-0.020	151.90	84.63

Consigned by: JH Cattle

We really hated to let this one go but Tim said he wanted good stock! One look and you'll see that Tanya Tucker has it all. Just a touch of chrome to go along with a very feminine look. Another JHC TATANKA (HB025466) daughter. Homozygous black. Lots of potential here to be a solid producing cow for years to come.

## 62

### AR MISS MISTY

Nov 21, 2024	JO JACK HAMMER 7A ET	Birth	68
HB035747	Sire: JM GAME ON 7A 633 J086	ratio	100
2405	JMCC R&R RITA P606 633	adj 205	
78.125%	C TRIPLE YOUR MILES 8124	ratio	
BWF	Dam: AR MISTY MILES	adj 365	
Homozygous Black	AR WILD CAT LISA 2071 ET	ratio	
Homozygous Polled			

CED	BW	WW	YW	MILK	TM	CEM	STAY
9.0	0.3	59	94	24	55	1.4	12.2
DOC	CW	YG	CREA	MARB	CFAT	API	TI
11.4	14	-0.08	0.68	0.18	-0.020	151.40	89.99

Consigned by: Acorn Ridge

Powerful well-built frame. Daughter of JM Game On 7A 633 J086. Love the look and presence this female brings to the table. She offers a blend of style, structure and genetic value. going back to JO Jack Hammer 7A ET to C Triple Your Miles 8124. If you are in the market for a quality replacement heifer, don't let this one pass you by.

## 61

### FLYNN KY BEST 3124 OF 3K

Sep 28, 2024	JN BALDER Y702	Birth	68
HB032751	Sire: TRIPLE T'S 3K KYRO BY Y702 ET	ratio	100
3124	TRIPLE T'S 505 BLACK JEANS	adj 205	541
81.15625%	TRIPLE T'S 13E BLK BARRON ET	ratio	102
BWF	Dam: FLYNN KY BEST 3322 OF 063	adj 365	860
Homozygous Black	FLYNN KY BEST 1718 OF 414	ratio	101
Homozygous Polled			

CED	BW	WW	YW	MILK	TM	CEM	STAY
10.7	0.1	55	86	27	55	4.7	13.7
DOC	CW	YG	CREA	MARB	CFAT	API	TI
11.7	7	0.05	0.29	0.15	-0.010	00	87.44

Consigned by: Wayne Flynn

Her Grandsire Y702 is one of the most proven and has some of the highest accuracy EPDS in the breed. She is thick and ready to breed to the bull of your choice.





## 63

### AR MADISON GAME 2408

Nov 15, 2024  
HB035746  
2408  
86.875%  
BWF  
Polled

JO JACK HAMMER 7A ET  
Sire: JM GAME ON 7A 633 J086  
JMCC R&R RITA P606 633

PURPLE MB WOMANIZER 14U ET  
Dam: SRF MISS MADISON  
SRF MISS SWEETHEART

Birth 68  
ratio 97  
adj 205  
ratio  
adj 365  
ratio

CED	BW	WW	YW	MILK	TM	CEM	STAY
6.3	1.4	64	92	26	58	0.9	9.6
DOC	CW	YG	CREA	MARB	CFAT	API	TI
11.4	15	-0.17	0.84	0.03	-0.040	134.20	87.80

Consigned by: Acorn Ridge

This girl has all the right pieces. She's really good in terms of her rib shape and has plenty of natural width and dimension. She's green but has the look to be in the show ring. Eye catching with feminine design and carried herself well.

ABHA  
GE-EPD



## 64

### AR HERSHEY 2406

Sep 21, 2024  
HB035749  
2406  
84.375%  
BWF  
Polled

JO JACK HAMMER 7A ET  
Sire: JM GAME ON 7A 633 J086  
JMCC R&R RITA P606 633

BF JM CATAPULT 1801 ET  
Dam: AR CATS CUP CAKE OF 1801 2184  
AUBREY'S 90W WILLA 1F

Birth 62  
ratio 97  
adj 205  
ratio  
adj 365  
ratio

CED	BW	WW	YW	MILK	TM	CEM	STAY
8.3	0.7	61	95	24	55	1.4	11.3
DOC	CW	YG	CREA	MARB	CFAT	API	TI
11.3	13	-0.07	0.67	-0.020	147.40	147.40	90.01

Consigned by: Acorn Ridge

She is cool marked, heavily pigmented and black eyed. Granddaughter of BF JM Catapult 1801 ET and JO Jackhammer 7A ET. This heifer is big bodied and has power cow written all over her.

ABHA  
GE-EPD



8160 North Hwy 27  
Science Hill, KY  
**606-423-3421**

## Bred Heifers

### 65 & 66

Consigned by: Triple T Farm

Lot 65) DOB: 3/25/24

Lot 66) DOB: 3/31/25

Attention commercial breeders. Here are 2 of the right kind that simply can't be beat for a commercial herd. Backed with some remarkable pedigrees. They will produce calves that will grow, and be docile. Their dams are high quality Angus and sired by a Triple T bull. They both are safe in calf due this spring. AI to the King of maternal Z420 Black Dynasty HB003405 who is homozygous Black, then Pasture exposed to Homozygous Black Bull 1524 /HB030721 and Houston 2124 /P44132510 Calving date will determine sire.



## Bred Heifer

### 67

Consigned by: Barrett Farm

DOB: 5/24/24

2413 BBH Mindy comes from a registered black Hereford and the neighbors black angus bull. She has been the a stand out from day one. This is a testament to her dam being a first calf heifer. Confirmed bred to an Angus bull for a March calf.



## Bred Heifer

### 68

Consigned by: Barrett Farm

DOB: 9/20/2023

2447 This heifer is a true F1 her dam is a registered angus cow and her sire is a registered Hereford bull. She is bred back to a low birth weight registered Hereford bull. We raise several of these just to sell to our commercial cattlemen. She had been a stand out in this group so we decided to bring her to this sale to support KBHA .She is bred to registered Hereford bull and is 6.5 to 8 months bred.





**ROD GARMAN**

(479) 957-2068

groundzrod@cox.net



**BULLS AND HEIFERS SOLD ALL YEAR LONG**

Continually striving to offer you the **BEST** cattle available!

We use only the top sires as well as many other top end genetics.

*Where Champions Are Born*

**WWW.GROUNDZEROFARMS.COM**



# Ladies OF THE Fall



**SULL Diana 6371D ET**



**K&K Matilda F642**



**JM Miss Maternal**



**JM Miss Leveling 708 9076**



**3CS SFF1 Bad And Boujee**



**3C'S Miss Atlantis**

**SELLING AT THE ROYAL AFFAIR**

*The Best is Yet to Come*

Charles Crow (256) 710-3594 | Jeremy Smith (706) 424-1744

1268 County Road 168 Killen, Alabama 35645 | <https://triplecblackherefords.com>





# **C** CENTRAL STATES **S** BLACK HEREFORD *Select Sale*

Brought to you by: Hamilton Family Livestock & Schroeder's Black Herefords

**Saturday, November 1, 2025**

**85 Lots of: Bulls, Fall Pairs, Fall Bred Heifers,  
Spring Bred Heifers & Open Heifers**



*Sale starts at 12pm Central*

**The Exchange at Wall Street Cattle Company  
14900 State Hwy KK, Lebanon, Missouri**

**Jason Schroeder  
573-680-1439**

**Mike Hamilton  
618-410-4293**

**Tyler Hamilton  
618-567-4339**

**For more information visit our Facebook Page.  
To request a sale catalog email [CentralStatesSelect@gmail.com](mailto:CentralStatesSelect@gmail.com)**



**KBHA**

Kentucky Black Hereford Association  
2616 HWY 1664  
Nancy, KY. 42544

Time Sensitive Material

KENTUCKY'S FINEST

*Black Hereford Sale*

October 25, 2025 1pm EST

HOSTED BY TRIPLE T FARMS, NANCY, KY

